

caracole



HALL CHEST

c091-020-461

COLLECTION: LILLIAN

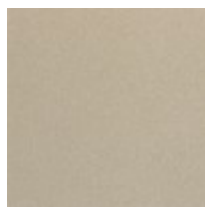
DIMENSIONS: 48W x 20D x 39.5H

Make an unforgettable first impression with the Lillian hall chest, an eye-catching design that elegantly mixes glamour with functionality. A Stone Manor finish gives light to radiating koto wood veneers, accentuated by Art Deco-inspired drawer pulls and carved legs in Soft Radiance paint. Features a curved top gallery and inset Silestone top, offering durability and stain resistance with the classic beauty of natural stone.

FINISH:



Stone Manor



Soft Radiance