

# caracole



## ENTERTAINMENT CONSOLE

c091-020-531

**COLLECTION:** LILLIAN

**DIMENSIONS:** 87.75W x 20.5D x 26H

A true statement piece in any interior, the Lillian entertainment console mixes the warmth of metallics with exquisite woodgrains for a contemporary glamour reminiscent of the Art Deco era. Radiating with style and functionality, it offers generous storage with adjustable shelves and cutouts for cord management. A curved top gallery in Soft Radiance paint adds a classic detail.

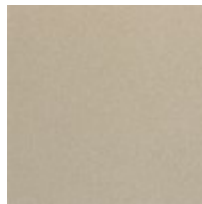
### FINISH:



Stone Manor



Ivory Wash



Soft Radiance