

# caracole



## AMPHORA

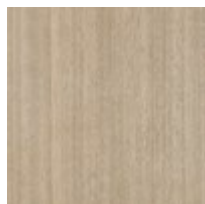
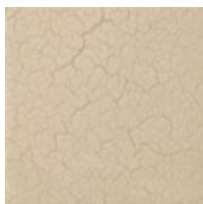
cla-423-051

**COLLECTION:** CARACOLE CLASSIC

**DIMENSIONS:** 32W x 16D x 52H

Drawing the eye with its striking shape and height, this semainier chest lets you create a one-of-a-kind, sensory experience. With a graceful form inspired by Grecian pottery, it features seven drawers, one for each day of the week, notated by corresponding brass brads and tactile hardware that can be seen and felt, even in low light. Perfect for keeping lingerie and linens, its Ivory Craze finish adds to its alluring texture and elegant presence.

**FINISH:**



Ivory Craze

Dry Martini