

# caracole



## BUTTONED UP

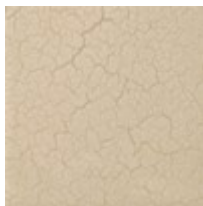
cla-423-416

**COLLECTION:** CARACOLE CLASSIC

**DIMENSIONS:** 48W x 48D x 14H

Designed to seamlessly fit with our Tuxedo seating collection, Buttoned Up fills a corner and makes a chic end table. Fully finished in Ivory Craze, its simple monolithic form and low profile allows for multiple configurations with other in-line styles. Pair with our Duality accent tables for added interest and dimension, or style as a free-floating cocktail table.

### FINISH:



Ivory Craze



Ivory