

caracole



LOVE AT FIRST SIGHT

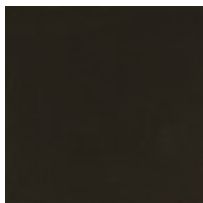
cla-424-032

COLLECTION: CARACOLE CLASSIC

DIMENSIONS: 74W x 19D x 35H

Dark and stately, Love At First Sight takes on a sultry demeanor in Dark Chocolate that accentuates the exquisite reeding on the drawer fronts with Whisper of Gold metal band detailing and designer legs. The piece has a gracefully rounded rectangular profile with nine drawers are felt-lined with under-mount guides.

FINISH:



Dark Chocolate



Whisper of Gold

