

# caracole



## TRIPLE WRAP

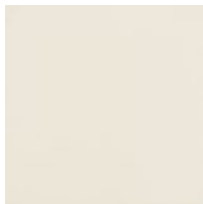
cla-424-064

**COLLECTION:** CARACOLE CLASSIC

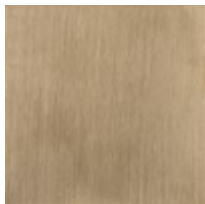
**DIMENSIONS:** 34W x 18D x 25H

Triple Wrap offers a slightly larger nightstand than Double Wrap. This light-colored, refined mix of materials and finishes are euromodern-inspired. Encased in Almond Milk, three deep drawers have textured vinyl fronts with the appearance of pearlized silk. Champagne Gold metal trim frames the three drawers that have soft edge pulls. Balanced on a plinth base, this clean-lined design works well in living and bedroom interiors.

### FINISH:



Almond Milk



Champagne Gold

**FABRIC:**



9301-87CC