

caracole



POP A TOP

uph-418-051-a

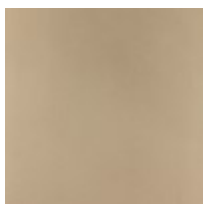
COLLECTION: CARACOLE UPHOLSTERY

DIMENSIONS: 20.5W x 20.5D x 20H

When form meets function, there's never been a more glamorous option. An elegant addition to a bedroom or living space, this stylish storage ottoman features a lift-off top and is finished inside with Taupe Paint for added appeal. Fashionable acrylic cabriole legs give it distinctive character while mirroring its curvy shape. Perfect for books, magazines, or a favorite throw blanket—you'll wonder how you ever lived without this multifunctional ottoman.

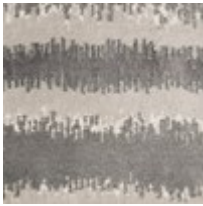
CONSTRUCTION: Plush poly foam cushion.

FINISH:



Taupe_Paint

FABRIC:



Body Fabric: 8276-
89CC