

caracole



ARCHIPELAGO LAF LOVESEAT

uph-422-ll1-a

COLLECTION: CARACOLE UPHOLSTERY

DIMENSIONS: 48.5W x 37D x 28H

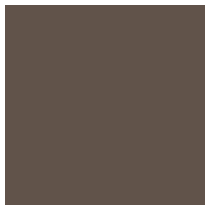
With numerous configurations and options for in-the-moment customization, the Archipelago collection introduces a relaxed sit with a refined aesthetic. Upholstered in a neutral twill fabric with a faux leather accent, and elevated on an exposed Bourbon Glaze wood base with metal legs in a Deep Bronze finish. Style luxe down pillows with a color-blocked expression of saffron velvet, or reverse to display an embroidered, geometric pattern. Collection also includes an armless chair, and matching armchair.

CONSTRUCTION: 8- way hand tied seat. | Spring down cushion. | Feather down pillow.

FINISH:



Bourbon Glaze



Deep Bronze

FABRIC:



1-17x34 Back pillow
2893-53CC-P
Performance



Body Fabric:2893-53CC-P Performance



Contrast Fabric 9186-53CC-P Performance



Pillow Fabric:1-17x29 Arm Pillow 2893-53CC-P Performance