

caracole



LATTICE ENTERTAIN YOU

uph-sofwoo-35a

COLLECTION: CARACOLE UPHOLSTERY

DIMENSIONS: 78W x 37.25D x 30.25H

Elegant embroidered fabric was the starting point for this exposed wood frame, influencing the open fretwork design on each arm panel. The Tuxedo Black finish is further set off by matte brass plated metal accents and a lush textured fabric. Float this sofa in a room in which you are able to take in all the sides, as we think it's stunning from every angle.

CONSTRUCTION: Ultra plush down cushion. | 8-way hand tied seat. | Feather down pillows.

FINISH:



Tuxedo_Black

FABRIC:



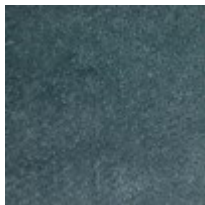
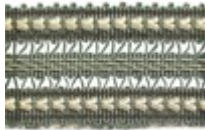
Body Fabric: 2284-86CC



2-20''' x 20''' Pillows
2285-52CC



1-20''' x 20''' Pillow
2153-52CC



Pillow Fabric: 2-20''' x
14''' Pillows Front
8104-52CC, Front
Ends 2153-52CC
with Double Row of
Trim U00415, Back
2285-52CC